



prijslijst X-treme **july 2009**

X-Treme - Linear Source Array

MODEL		Euro (Tax excl.)
XTLSA	Linear Source Array Module - Power handling RMS: 760 W - Power handling Music: 1500 W Impedance (bi-amp): 8 (LF), 8 (MF+HF) Ohm - Tri-amplifiable speaker - Max SPL: 137 dB Transducers: LF 1x12" Neodymium, MF 2x6" Neodymium, HF 2x1" Titanium - Narrow Beam Double Horn	3.646,00
XTLSAS	Arrayable LSA Double Subwoofer - Power handling RMS: 2400 W - Power Music: 4800 W Impedance: 4 Ohm - Special version available on request: 4+4 Ohm impedance - Max SPL: 142 dB Transducers: 2x18" Neodymium	2.802,00

X-Treme - Active Linear Source Array with dsp

MODEL		Euro (Tax excl.)
XTLSA/A	Active Linear Source Array Module - Class D Digital Amplifier - Power RMS: 800+800 W Digital DSP: 24 bit, 96 kHz (2 presets) - Network for XT-NET - Max SPL: 137 dB Transducers: LF 1x12" Neodymium, MF 2x6" Neodymium, HF 2x1" Titanium - Narrow Beam Double Horn	4.722,00
XTLSAS/A	Active Arrayable LSA Double Subwoofer - Class D Digital Amplifier - Power RMS: 2500 W Digital DSP: 24 bit, 96 kHz (2 presets) - Network for XT-NET- Max SPL: 142 dB Transducers: 2x18" Neodymium	4.030,00

X-Treme - Linear Source Array Accessories

MODEL		Euro (Tax excl.)
STD-LSA	Flying bar for Linear Source Array	1.262,00
XT-PIN	Stainless steel spring pin with ball locking	23,00
XT-ANGLE	Electro-mechanical device for setting the pitch of the line array systems (flying bar not included)	2.464,00
XT-ANGLERC	Remote controller for XT-ANGLE with bright display (cable included, 10 m in length)	640,00
XT-D8P	Connection panel specially designed for line arrays	99,00
XT-PSB32/8	Patch board 32A - 2 XLR IN, 2 XLR OUT - 4 Speakon OUT NL8MPR - 3 rack units	798,00
XT-NETINT	Network Interface for XT-NET connection (PC adapter: from USB or RS232 to standard RJ45)	325,00
XT-NETPS	Power unit for supplying up to 2 XT-NETINT (if a RS232 is used)	197,00
XT-NETRACK	19" Rack mounted patch board with 3 sockets for XT-NET pc adapters - 1 rack unit	141,00
XTLSA-SK	Wheelboard for XTLSA and XTLSA/A loudspeaker system	172,00
XTLSAS-SK	Wheelboard for XTLSAS and XTLSAS/A double subwoofer	172,00



XTLSA



XTLSAS



X-Treme - MISI™

MODEL		Euro (Tax excl.)
XTMISI	Middle-Sized Line Array Module - Power handling RMS: 900 W - Power handling Music: 1800 W Impedance (bi-amp): 8 (LF), 8 (MF+HF) Ohm - Tri-amplifiable speaker - Max SPL: 136 dB Transducers: LF 1x10" Neodymium, MF 1x10" Neodymium, HF 2x1" Titanium - EIWD™	2.385,00
XTMISIS	Arrayable MISI Double Subwoofer - Power handling RMS: 2400 W - Power handling Music: 4800 W Impedance: 4 Ohm - Special version available on request: 4+4 Ohm impedance - Max SPL: 140 dB Transducers: 2x18" Neodymium	2.563,00

X-Treme - Active MISI™ with dsp

MODEL		Euro (Tax excl.)
XTMISI/A	Active Middle-Sized Line Array Module - Class D Digital Amplifier - Power RMS: 800+800 W Digital DSP: 24 bit, 96 kHz (2 presets) - Network for XT-NET - Max SPL: 136 dB Transducers: LF 1x10" Neodymium, MF 1x10" Neodymium, HF 2x1" Titanium - EIWD™	3.369,00
XTMISIS/A	Active Arrayable MISI Double Subwoofer - Class D Digital Amplifier - Power RMS: 2500 W Digital DSP: 24 bit, 96 kHz (2 presets) - Network for XT-NET - Max SPL: 140 dB Transducers: 2x18" Neodymium	3.799,00

X-Treme - MISI™ Accessories

MODEL		Euro (Tax excl.)
STD-MISI	Flying bar for Middle-Sized Line Array	587,00
XT-PIN	Stainless steel spring pin with ball locking	23,00
XT-ANGLE	Electro-mechanical device for setting the pitch of the line array systems (flying bar not included)	2.464,00
XT-ANGLERC	Remote controller for XT-ANGLE with bright display (cable included, 10 m in length)	640,00
XT-D8P	Connection panel specially designed for line arrays	99,00
XT-PSB32/8	Patch board 32A - 2 XLR IN, 2 XLR OUT - 4 Speakon OUT NL8MPPR - 3 rack units	798,00
XT-NETINT	Network Interface for XT-NET connection (PC adapter: from USB or RS232 to standard RJ45)	325,00
XT-NETPS	Power unit for supplying up to 2 XT-NETINT (if a RS232 is used)	197,00
XT-NETRACK	19" Rack mounted patch board with 3 sockets for XT-NET pc adapters - 1 rack unit	141,00
XTMISIS-SK	Wheelboard for XTMISIS and XTMISIS/A double subwoofer	174,00



XTMISI



XTMISIS



X-Treme - Mini Line Array

MODEL		Euro (Tax excl.)
XTMLA	Mini Line Array Module - Power handling RMS: 500 W - Power handling Music: 1000 W Impedance (bi-amp): 16 (LF), 16 (MF+HF) Ohm - Tri-amplifiable speaker - Max SPL: 133 dB Transducers: LF 1x8" Neodymium, MF 1x6" Neodymium, HF 2x1" Titanium - EIWD™	1.848,00
XTMLAS	Arrayable MLA Double Subwoofer - Power handling RMS: 2000 W - Power Music: 4000 W Impedance: 4 Ohm - Max SPL: 138 dB Transducers: 2x15" Neodymium	1.969,00

X-Treme - Active Mini Line Array with dsp

MODEL		Euro (Tax excl.)
XTMLA/A	Active Mini Line Array Module - Class D Digital Amplifier - Power RMS: 800+800 W Digital DSP: 24 bit, 96 kHz (2 presets) - Network for XT-NET - Max SPL: 133 dB Transducers: LF 1x8" Neodymium, MF 1x6" Neodymium, HF 2x1" Titanium - EIWD™	2.975,00
XTMLAS/A	Active Arrayable MLA Double Subwoofer - Class D Digital Amplifier - Power RMS: 2500 W Digital DSP: 24 bit, 96 kHz (2 presets) - Network for XT-NET - Max SPL: 138 dB Transducers: LF 2x15" Neodymium	3.265,00

X-Treme - Mini Line Array Accessories

MODEL		Euro (Tax excl.)
STD-MLA	Flying bar for Mini Line Array	513,00
XT-PIN	Stainless steel spring pin with ball locking	23,00
XT-ANGLE	Electro-mechanical device for setting the pitch of the line array systems (flying bar not included)	2.464,00
XT-ANGLERC	Remote controller for XT-ANGLE with bright display (cable included, 10 m in length)	640,00
XT-D8P	Connection panel specially designed for line arrays	99,00
XT-PSB32/8	Patch board 32A - 2 XLR IN, 2 XLR OUT - 4 Speakon OUT NL8MPR - 3 rack units	798,00
XT-NETINT	Network Interface for XT-NET connection (PC adapter: from USB or RS232 to standard RJ45)	325,00
XT-NETPS	Power unit for supplying up to 2 XT-NETINT (if a RS232 is used)	197,00
XT-NETRACK	19" Rack mounted patch board with 3 sockets for XT-NET pc adapters - 1 rack unit	141,00
XTMLA-PORT	Stand holder for Mini Line Array "portable" configuration	383,00
XTMLAS-SK	Wheelboard for XTMLAS and XTMLAS/A double subwoofer	155,00



XTMLA



XTMLAS

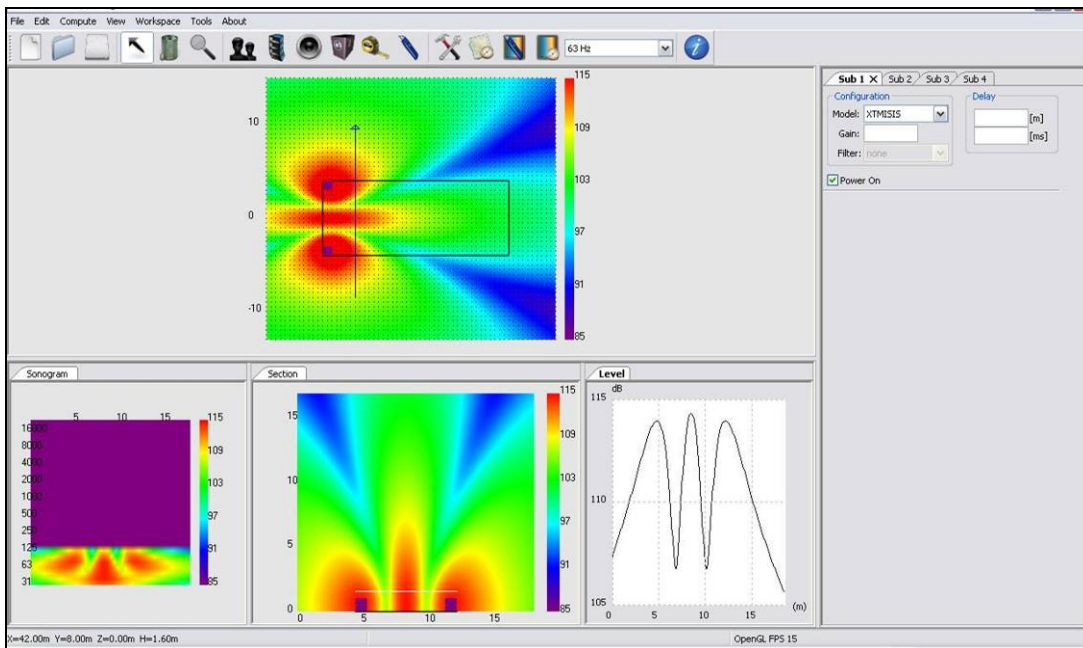
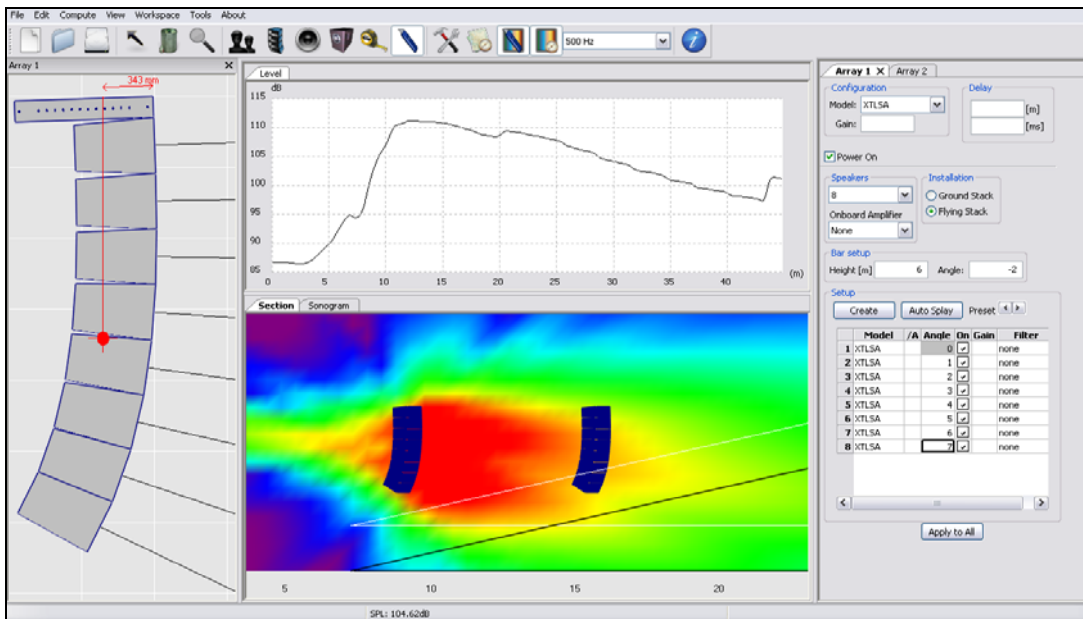
X-Treme Installer™



MODEL

Euro (Tax excl.)

<p>XTI</p>	<p>Proprietary software designed and developed to create a 3D space virtual installation of Vertical Line Arrays and the other X-Treme loudspeaker systems</p>	<p>230,00</p>
-------------------	--	----------------------



X-Treme - Monitor Line

MODEL		Euro (Tax excl.)
XTMON12	Professional Stage Monitor - Power handling RMS: 450 W - Power handling Music: 900 W Impedance: 8 Ohm - Max SPL: 132 dB Transducers: LF 1x12" Coaxial Neodymium, HF 1x3" Titanium	1.039,00
XTMON15	Professional Stage Monitor - Power handling RMS: 500 W - Power handling Music: 1000 W Impedance: 8 Ohm - Max SPL: 133 dB Transducers: LF 1x15" Coaxial Neodymium, HF 1x3" Titanium	1.265,00

X-Treme - Active Monitor Line with dsp

MODEL		Euro (Tax excl.)
XTMON12/A	Active Professional Stage Monitor - Class D Digital Amplifier - Power RMS: 800+800 W Digital DSP: 24 bit, 96 kHz (2 presets) - Network for XT-NET - Max SPL: 132 dB Transducers: LF 1x12" Coaxial Neodymium, HF 1x3" Titanium	2.174,00
XTMON15/A	Active Professional Stage Monitor - Class D Digital Amplifier - Power RMS: 800+800 W Digital DSP: 24 bit, 96 kHz (2 presets) - Network for XT-NET - Max SPL: 133 dB Transducers: LF 1x15" Coaxial Neodymium, HF 1x3" Titanium	2.415,00

X-Treme - Monitor Line Accessories

MODEL		Euro (Tax excl.)
XT-NETINT	Network Interface for XT-NET connection (PC adapter: from USB or RS232 to standard RJ45)	325,00
XT-NETPS	Power unit for supplying up to 2 XT-NETINT (if a RS232 is used)	197,00
XT-NETRACK	19" Rack mounted patch board with 3 sockets for XT-NET pc adapters - 1 rack unit	141,00



XTMON12



XTMON15

X-Treme - Classic Line

MODEL		Euro (Tax excl.)
XTH	Two-way (MF-HF) Professional Speaker - Power handling RMS: 550 W - Power handling Music: 1100 W Impedance: 8 Ohm - Max SPL: 137 dB Transducers: MF 1x12" Neodymium, HF 1x2" Titanium	1.987,00
XTL	Professional Woofer - Power handling RMS: 850 W - Power handling Music: 1700 W Impedance: 8 Ohm - Max SPL: 137 dB Transducers: LF 1x18"	1.499,00
XTS	Professional Subwoofer - Power handling RMS: 1200 W - Power handling Music: 2400 W Impedance: 8 Ohm - Max SPL: 137 dB Transducers: 1x18" Neodymium	1.526,00

X-Treme - Classic Line Long Throw Module

MODEL		Euro (Tax excl.)
XTLT	Professional Long Throw Module - Power handling RMS: 460 W - Power handling Music: 900 W Impedance: 4 Ohm - Max SPL: 140 dB Transducers: MF 3x6" Neodymium, HF 2x1" Titanium	2.745,00

X-Treme - Classic Line Accessories

MODEL		Euro (Tax excl.)
STD-XT2	Flying bar for hanging 2 Classic Line loudspeaker systems	408,00
STD-XT3	Flying bar for hanging 3 Classic Line loudspeaker systems	568,00
XT-KITSTD	Flying kit for hanging 1 Classic Line speaker to the STD-XT2 or STD-XT3 bars	117,00
XT-KITCLA	Flying kit for hanging 1 Classic Line speaker to another one	138,00
XT-G	"Bri pin" ring hook D. 11 mm	53,00
XT-TIR	Tie rod D. 8A/A L. 350-500-650 mm	25,00
XT-PIN	Stainless steel spring pin with ball locking	23,00
XT-SN	Joint for hanging 1 Classic Line speaker to another one	27,00
XT-TF	Strip-type belt with ratchet (D. mm 25, L. m 4,5)	46,00
XT-PSB32/4	Patch board 32A - 2 XLR IN, 2 XLR OUT - 4 Speakon OUT NL4MPR - 3 rack units	714,00
XT-COVER	Protection enclosure for Classic Line loudspeaker systems	114,00
XTCLASSIC-SK	Wheelboard for all the Classic Line loudspeaker systems	167,00



XTH

X-Treme - X-ONE

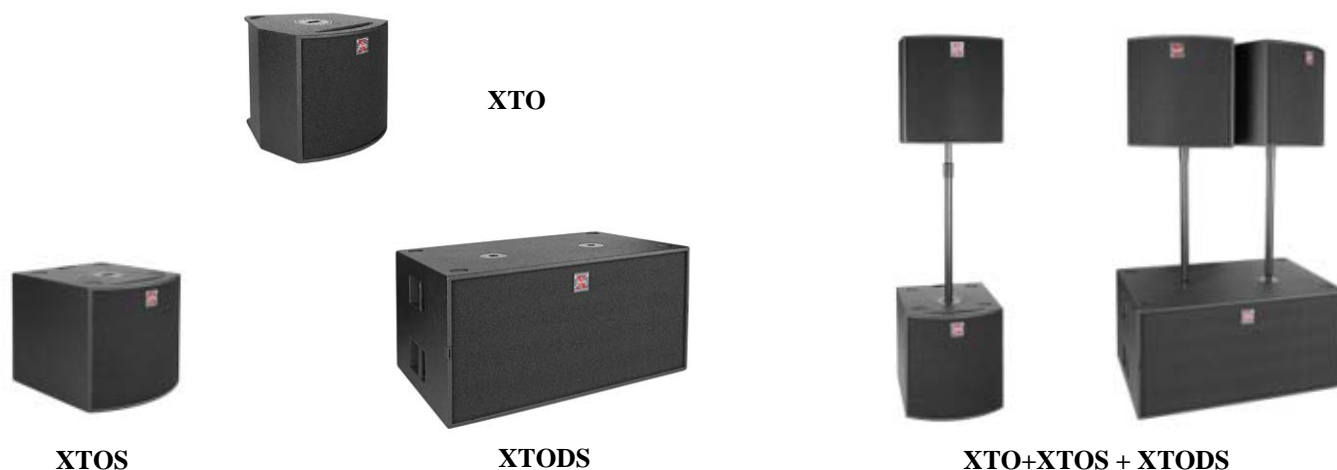
MODEL		Euro (Tax excl.)
XTO	Single Point Source Speaker - Power handling RMS: 800 W - Power handling Music: 1600 W Impedance (full range): 8 Ohm - Max SPL: 136 dB Transducers: LF 1x15" Neodymium, HF 1x2,83" Titanium Coverage Angle (-6 dB): 60° conical - Horizontal, Vertical and Crosswise Constant Directivity Special design for being also used as stage monitor with two different vertical angles for near or far listeners	1.343,00

X-Treme - X-ONE Subwoofers

MODEL		Euro (Tax excl.)
XTOS	Professional Subwoofer - Power handling RMS: 1000 W - Power handling Music: 2000 W Impedance: 8 Ohm - Max SPL: 133 dB Transducers: 1x15" Neodymium Properly realized for a perfect coupling with an XTO loudspeaker system	1.053,00
XTODS	Professional Double Subwoofer - Power handling RMS: 2000 W - Power handling Music: 4000 W Impedance: 4 Ohm - Max SPL: 139 dB Transducers: 2x15" Neodymium Properly realized for a perfect coupling with 2 XTO loudspeaker systems	2.110,00

X-Treme - X-ONE Accessories

MODEL		Euro (Tax excl.)
STD-ONE	Horizontal flying bar for hanging an XTO or XTOS speaker to create horizontal clusters (2 XT-PIN included)	113,00
STD-ONEBAR	Vertical flying bar for hanging an XTO or XTOS speaker to create vertical clusters (2 XT-PIN included)	114,00
XT-GN	Hook for the attachment to a rigging system	10,00
XT-PIN	Stainless steel spring pin with ball locking	23,00
XT-KITONEV	Flying kit for securing an XTO or XTOS speaker to another one to create vertical clusters (2 STD-ONEBAR + 2 XT-G + 1 XT-SC)	207,00
XT-G	"Bri pin" ring hook D. 11 mm	53,00
XT-SC	Screw Catch for vertical connection	9,00
XT-KITONEH	Flying kit for securing an XTO or XTOS speaker to another one to create horizontal clusters (4 XT-PIN + 2 XT-ONEAC)	189,00
XT-ONEAC	Adapter for connecting an XTO or XTOS speaker to another one in horizontal clusters	92,00
XT-TF	Strip-type belt with ratchet (D. mm 25, L. m 4,5)	46,00
XT-ST100	Adjustable-height stand holder for subwoofer-upper module connection	39,00
XT-ST125	Adjustable-height three-legged stand for an XTO speaker	86,00
XT-SNO	Joint for subwoofer-upper module connection suitable for vertical inclination adjustment	70,00
XTODS-SK	Wheelboard for XTODS subwoofer	182,00



X-Treme - Deflector Line

MODEL		Euro (Tax excl.)
XTD88	Professional Loudspeaker System - Power handling RMS: 550 W - Power handling Music: 1000 W Impedance: 8 Ohm - Max SPL: 129 dB - Transducers: LF 2x8" Neodymium, HF 1x1" Mylar	818,00
XTD12	Professional Loudspeaker System - Power handling RMS: 850 W - Power handling Music: 1700 W Impedance: 8 Ohm - Max SPL: 133 dB - Transducers: LF 1x12" Neodymium, HF 1x1,4" Titanium - AWSH® Cabinet equipped with a proprietary curved deflector designed to control the inner air flow	1.267,00
XTD15	Professional Loudspeaker System - Power handling RMS: 750 W - Power handling Music: 1500 W Impedance: 8 Ohm - Max SPL: 134 dB - Transducers: LF 1x15" Neodymium, HF 1x1,4" Titanium - AWSH® Cabinet equipped with a proprietary curved deflector designed to control the inner air flow	1.255,00
XTD1015	Three-way Professional Loudspeaker System - Power handling RMS: 1400 W - Power Music: 2800 W Impedance (bi-amp): 8 (LF), 8 (MF+HF) Ohm - Max SPL: 138 dB Transducers: LF 1x15" Neodymium, MF 1x10" Neodymium, HF 1x1,4" Titanium - AWSH® Cabinet equipped with a proprietary curved deflector designed to control the inner air flow	1.569,00
XTDS15	Professional Subwoofer - Power handling RMS: 1000 W - Power handling Music: 2000 W Impedance: 8 Ohm - Max SPL: 134 dB - Transducers: LF 1x15" Neodymium	877,00
XTDS18	Professional Subwoofer - Power handling RMS: 1200 W - Power handling Music: 2400 W Impedance: 8 Ohm - Max SPL: 136 dB - Transducers: LF 1x18" Neodymium	989,00



XTD88



XTD12



XTD15



XTD1015



XTDS15



XTDS18

X-Treme - Active Deflector Line with dsp

MODEL		Euro (Tax excl.)
XTD88/A	Active Professional Loudspeaker System - Class D Digital Amplifier - Power RMS: 500 W Switching DSP: 24 bit, 96 kHz (2 presets) - Max SPL: 129 dB - Transducers: LF 2x8" Neodymium, HF 1x1" Mylar	1.341,00
XTD12/A	Active Professional Loudspeaker System - Class D Digital Amplifier - Power RMS: 800+800 W Switching DSP: 24 bit, 96 kHz (4 presets) - Max SPL: 133 dB - Transducers: LF 1x12" Neodymium, HF 1x1,4" Titanium - AWSH [®] - Cabinet equipped with a proprietary curved deflector designed to control the inner air flow	2.099,00
XTD15/A	Active Professional Loudspeaker System - Class D Digital Amplifier - Power RMS: 800+800 W Switching DSP: 24 bit, 96 kHz (4 presets) - Max SPL: 134 dB - Transducers: LF 1x15" Neodymium, HF 1x1,4" Titanium - AWSH [®] - Cabinet equipped with a proprietary curved deflector designed to control the inner air flow	2.178,00
XTD1015/A	Active Three-way Professional Loudspeaker System - Class D Digital Amplifier - Power RMS: 800+800 W Switching DSP: 24 bit, 96 kHz (4 presets) - Max SPL: 138 dB Transducers: LF 1x15" Neodymium, MF 1x10" Neodymium, HF 1x1,4" Titanium - AWSH [®] Cabinet equipped with a proprietary curved deflector to control the inner air flow	2.564,00
XTDS15/A	Active Professional Subwoofer - Class D Digital Amplifier - Power RMS: 1600 W Digital DSP: 24 bit, 96 kHz (4 presets) - Max SPL: 134 dB - Transducers: 1x15" Neodymium	1.868,00
XTDS18/A	Active Professional Subwoofer - Class D Digital Amplifier - Power RMS: 1600 W Digital DSP: 24 bit, 96 kHz (4 presets) - Max SPL: 136 dB - Transducers: 1x18" Neodymium	1.979,00

X-Treme - Deflector Line Accessories

MODEL		Euro (Tax excl.)
STD-WALL	Wall bracket for vertical support of a Deflector Line loudspeaker system	64,00
XT-KITDEF	Flying kit (formed by 3 XT-FTH) for hanging 1 Deflector Line speaker to a rigging system	18,00
XT-FTH	Joint hook with ring to be wedged into the flying track for horizontal or vertical suspension	6,00
XT-ST100	Adjustable-height stand holder for subwoofer-upper module connection	39,00
XT-ST125	Adjustable-height three-legged stand	86,00



XT-FTH



X-Treme - "Big Punch" High Power Subwoofers

MODEL		Euro (Tax excl.)
XTHPS21	Professional "Infra-bass" Subwoofer - Power handling RMS: 1500 W - Power handling Music: 3000 W Impedance: 8 Ohm - Max SPL: 139 dB - Transducers: 1x21" Neodymium	1.586,00
XTHPS33	Professional "Big Punch" Double Subwoofer - Power handling RMS: 2200 W - Power Music: 4400 W Impedance: 4 Ohm - Max SPL: 142 dB - Transducers: 1x15" Neodymium + 1x18" Neodymium	2.408,00
XTHPS36	Professional "Big Punch" Double Subwoofer - Power handling RMS: 2400 W - Power Music: 4800 W Impedance: 4 Ohm - Special version available on request: 4+4 Ohm impedance - Max SPL: 143 dB Transducers: 2x18" Neodymium	2.448,00
XTCARDIIOD	Professional "Big Punch" Cardioid Subwoofer - Power handling RMS: front 2400 W (4 Ohm), rear 1200 W (8 Ohm) - Max SPL: 144 dB - Transducers: 3x18" Neodymium	2.913,00

X-Treme - Active "Big Punch" HPS with dsp

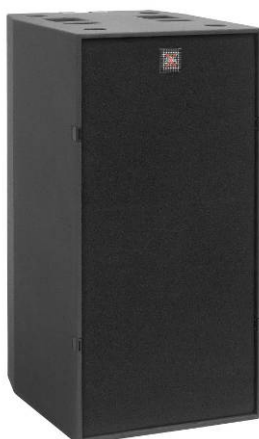
MODEL		Euro (Tax excl.)
XTHPS36/A	Active Professional "Big Punch" Double Subwoofer - Class D Digital Amplifier - Power RMS: 2500 W Digital DSP: 24 bit, 96 kHz (2 presets) - Network for XT-NET - Max SPL: 143 dB Transducers: 2x18" Neodymium	3.946,00

X-Treme - "Big Punch" HPS Accessories

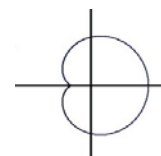
MODEL		Euro (Tax excl.)
XTHPS21-SK	Wheelboard for XTHPS21 subwoofer	182,00
XTHPS33-SK	Wheelboard for XTHPS33 double subwoofer	211,00
XTHPS36-SK	Wheelboard for XTHPS36 double subwoofer	211,00
XTCARDIOD-SK	Wheelboard for XTCARDIOD subwoofer	211,00



XTHPS21



XTHPS33



XTHPS36



XTCARDIOD

X-Treme - Digital Technology Amplifiers

MODEL		Euro (Tax excl.)
XTDT3200	Stereo Switching Class D Amplifier with PFC (95-265 VAC) - Output Power RMS: 2x1600 W (@4 Ohm) Frequency response: 20÷20k Hz (- 1 dB) - Selectable Gain from 26 dB to 44 dB (3 dB step) THD+N < 0,1% - SMPTE-IM < 0,35% - Net Weight: 10,2 kg	2.044,00
XTDT3800	Stereo Switching Class D Amplifier with PFC (95-265 VAC) - Output Power RMS: 2x1900 W (@4 Ohm) Frequency response: 20÷20k Hz (- 1 dB) - Selectable Gain from 26 dB to 44 dB (3 dB step) THD+N < 0,1% - SMPTE-IM < 0,35% - Net Weight: 10,2 kg	2.290,00
XTDT4800F	Stereo Switching Class D Amplifier with PFC (95-265 VAC) - Output Power RMS: 4x1200 W (@4 Ohm) Frequency response: 20÷20k Hz (- 1 dB) - Selectable Gain from 26 dB to 44 dB (3 dB step) THD+N < 0,1% - SMPTE-IM < 0,35% - Net Weight: 11,8 kg	2.947,00
XTDT6000F	Stereo Switching Class D Amplifier with PFC (95-265 VAC) - Output Power RMS: 4x1500 W (@4 Ohm) Frequency response: 20÷20k Hz (- 1 dB) - Selectable Gain from 26 dB to 44 dB (3 dB step) THD+N < 0,1% - SMPTE-IM < 0,35% - Net Weight: 11,8 kg	3.419,00

X-Treme - Controllers

MODEL		Euro (Tax excl.)
XTDP24	Digital Speaker Management System - Ways: 2 Input, 4 Output - Frequency response: 12÷20k Hz ±0,5 dB Sampling: 24 bit, 96 kHz with third generation Sharc processors	1.258,00
XTDP26	Digital Speaker Management System - Ways: 2 Input, 6 Output - Frequency response: 12÷20k Hz ±0,5 dB Sampling: 24 bit, 96 kHz with third generation Sharc processors Remote PC control for long-distances by XT-NET networking (through Ethernet cable)	1.472,00



XTDT family



XTDP24+XTDP26

Prijzen in euro excl BTW

Prijswijzigingen voorbehouden.

Op alle leveringen zijn de verkoopvoorwaarden van toepassing zoals deze gedeponereerd zijn bij de kamer van koophandel te Enschede no: 06075643