

Holland Audio Import; Vosboerweg 20; 7556 BS Hengelo; T:074-2424477 F:074-2439275 E:info@hai-nl.com

Prijslijst X-treme oktober 2010



X-Treme - Linear Source Array

MODEL		€(Excl BTW)
XTLSA	Linear Source Array Module - Power handling RMS: 760 W - Power handling Music: 1500 W Impedance (bi-amp): 8 (LF), 8 (MF+HF) Ohm - Tri-amplifiable speaker - Max SPL (@ 1m): 137 dB Transducers: LF 1x12" Neodymium, MF 2x6" Neodymium, HF 2x1" Titanium - Narrow Beam Double Horn	3646.00
XTLSAS	Arrayable LSA Double Subwoofer - Power handling RMS: 2400 W - Power handling Music: 4800 W Impedance: 4 Ohm - Special version available on request: 4+4 Ohm impedance Max SPL (@ 1m): 142 dB - Transducers: 2x18" Neodymium	2802.00

X-Treme - Active Linear Source Array with dsp

XTLSA/A	Active Linear Source Array Module - Class D Digital Amplifier - Amplifier Power RMS: 800+800 W DSP on board: 24 bit, 96 kHz (2 presets) - Network for XT-NET - Max SPL (@ 1m): 137 dB Transducers: LF 1x12" Neodymium, MF 2x6" Neodymium, HF 2x1" Titanium - Narrow Beam Double Horn	4722.00
XTLSAS/A	Active Arrayable LSA Double Subwoofer - Class D Digital Amplifier - Amplifier Power RMS: 2500 W DSP on board: 24 bit, 96 kHz (2 presets) - Network for XT-NET - Max SPL (@ 1m): 142 dB Transducers: 2x18" Neodymium	4030.00

X-Treme - Linear Source Array Accessories

STD-LSA	Flying bar for Linear Source Array	1262.00
XT-PIN	Stainless steel spring pin with ball locking	23.00
XT-ANGLE	Electro-mechanical device for setting the pitch of the line array systems (flying bar not included)	2464.00
XT-ANGLERC	Remote controller for XT-ANGLE with bright display (cable included, 10 m in length)	640.00
XT-D8P	Connection panel specially designed for line arrays	99.00
XT-PSB32/8	Patch board 32A - 2 XLR IN, 2 XLR OUT - 4 Speakon OUT NL8MPR - 3 rack units	798.00
XT-NETINT	Network Interface for XT-NET connection (PC adapter: from USB or RS232 to standard RJ45)	325.00
XT-NETPS	Power unit to supply up to 2 XT-NETINT (if a RS232 is used)	197.00
XT-NETRACK	19" Rack mounted patch board with 3 sockets for XT-NET pc adapters - 1 rack unit	141.00
XTLSA-SK	Wheelboard for XTLSA and XTLSA/A loudspeaker system	234.00
XTLSAS-SK	Wheelboard for XTLSAS and XTLSAS/A double subwoofer	234.00



XTLSA



XTLSAS



X-Treme - MISI™

XTMISI	Middle-Sized Line Array Module - Power handling RMS: 900 W - Power handling Music: 1800 W Impedance (bi-amp): 8 (LF), 8 (MF+HF) Ohm - Tri-amplifiable speaker - Max SPL (@ 1m): 136 dB Transducers: LF 1x10" Neodymium, MF 1x10" Neodymium, HF 2x1" Titanium - EIWD™	2385.00
XTMISIS	Arrayable MISI Double Subwoofer - Power handling RMS: 2400 W - Power handling Music: 4800 W Impedance: 4 Ohm - Special version available on request: 4+4 Ohm impedance Max SPL (@ 1m): 140 dB - Transducers: 2x18" Neodymium	2563.00

X-Treme - Active MISI™ with dsp

XTMISI/A	Active Middle-Sized Line Array Module - Class D Digital Amplifier - Amplifier Power RMS: 800+800 W DSP on board: 24 bit, 96 kHz (2 presets) - Network for XT-NET - Max SPL (@ 1m): 136 dB Transducers: LF 1x10" Neodymium, MF 1x10" Neodymium, HF 2x1" Titanium - EIWD™	3369.00
XTMISIS/A	Active Arrayable MISI Double Subwoofer - Class D Digital Amplifier - Amplifier Power RMS: 2500 W DSP on board: 24 bit, 96 kHz (2 presets) - Network for XT-NET - Max SPL (@ 1m): 140 dB Transducers: 2x18" Neodymium	3799.00

X-Treme - MISI™ Accessories

STD-MISI	Flying bar for Middle-Sized Line Array	625.00
XT-PIN	Stainless steel spring pin with ball locking	23.00
XT-ANGLE	Electro-mechanical device for setting the pitch of the line array systems (flying bar not included)	2464.00
XT-ANGLERC	Remote controller for XT-ANGLE with bright display (cable included, 10 m in length)	640.00
XT-D8P	Connection panel specially designed for line arrays	99.00
XT-PSB32/8	Patch board 32A - 2 XLR IN, 2 XLR OUT - 4 Speakon OUT NL8MPR - 3 rack units	798.00
XT-NETINT	Network Interface for XT-NET connection (PC adapter: from USB or RS232 to standard RJ45)	325.00
XT-NETPS	Power unit to supply up to 2 XT-NETINT (if a RS232 is used)	197.00
XT-NETRACK	19" Rack mounted patch board with 3 sockets for XT-NET pc adapters - 1 rack unit	141.00
XTMISIS-SK	Wheelboard for XTMISIS and XTMISIS/A double subwoofer	193.00



XTMISI



XTMISIS



X-Treme - Mini Line Array

XTMLA	Mini Line Array Module - Power handling RMS: 500 W - Power handling Music: 1000 W Impedance (bi-amp): 16 (LF), 16 (MF+HF) Ohm - Tri-amplifiable speaker - Max SPL (@ 1m): 133 dB Transducers: LF 1x8" Neodymium, MF 1x6" Neodymium, HF 2x1" Titanium - EIWD™	1848.00
XTMLAS	Arrayable MLA Double Subwoofer - Power handling RMS: 2000 W - Power handling Music: 4000 W Impedance: 4 Ohm - Max SPL (@ 1m): 138 dB Transducers: 2x15" Neodymium	1969.00

X-Treme - Active Mini Line Array with dsp

XTMLA/A	Active Mini Line Array Module - Class D Digital Amplifier - Amplifier Power RMS: 800+800 W DSP on board: 24 bit, 96 kHz (2 presets) - Network for XT-NET - Max SPL (@ 1m): 133 dB Transducers: LF 1x8" Neodymium, MF 1x6" Neodymium, HF 2x1" Titanium - EIWD™	2975.00
XTMLAS/A	Active Arrayable MLA Double Subwoofer - Class D Digital Amplifier - Amplifier Power RMS: 2500 W DSP on board: 24 bit, 96 kHz (2 presets) - Network for XT-NET - Max SPL (@ 1m): 138 dB Transducers: 2x15" Neodymium	3265.00

X-Treme - Mini Line Array Accessories

STD-MLA	Flying bar for Mini Line Array	518.00
XT-PIN	Stainless steel spring pin with ball locking	23.00
XT-ANGLE	Electro-mechanical device for setting the pitch of the line array systems (flying bar not included)	2464.00
XT-ANGLERC	Remote controller for XT-ANGLE with bright display (cable included, 10 m in length)	640.00
XT-D8P	Connection panel specially designed for line arrays	99.00
XT-PSB32/8	Patch board 32A - 2 XLR IN, 2 XLR OUT - 4 Speakon OUT NL8MPR - 3 rack units	798.00
XT-NETINT	Network Interface for XT-NET connection (PC adapter: from USB or RS232 to standard RJ45)	325.00
XT-NETPS	Power unit to supply up to 2 XT-NETINT (if a RS232 is used)	197.00
XT-NETRACK	19" Rack mounted patch board with 3 sockets for XT-NET pc adapters - 1 rack unit	141.00
XTMLA-PORT	Stand holder for Mini Line Array "portable" configuration	383.00
XTMLAS-SK	Wheelboard for XTMLAS and XTMLAS/A double subwoofer	183.00



XTMLA

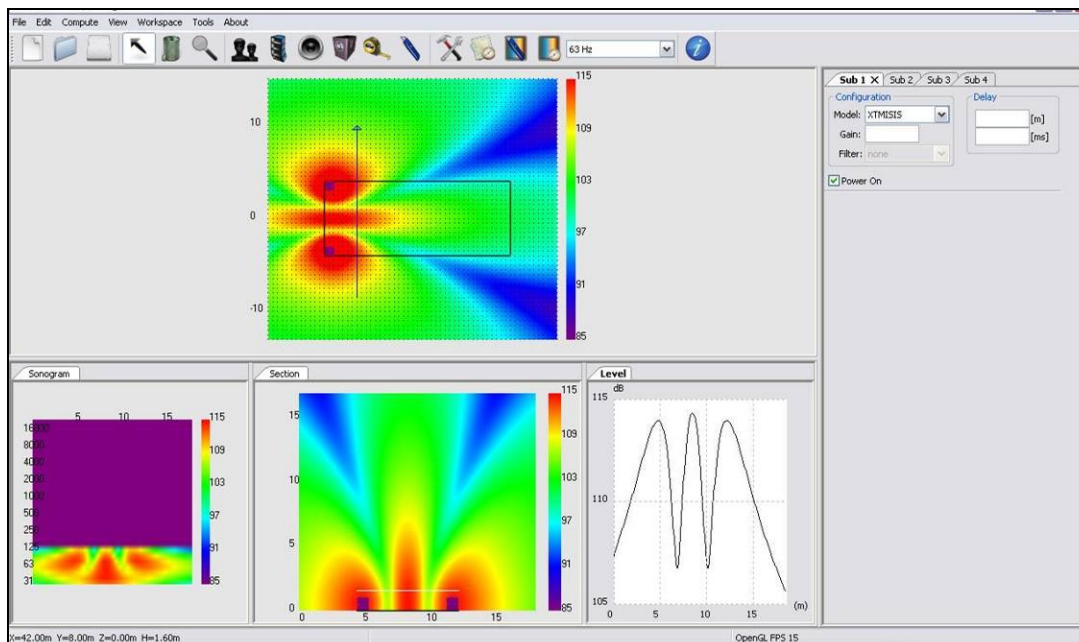
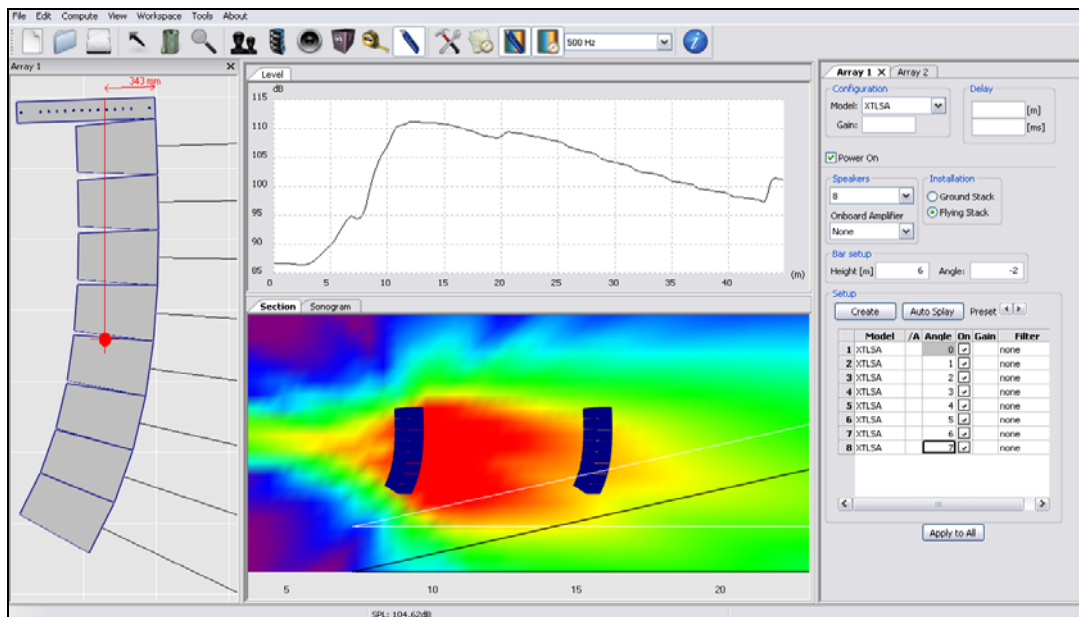


XTMLAS

X-Treme Installer™



XTI	Proprietary software designed and developed to create a 3D space virtual installation of Vertical Line Arrays and the other X-Treme loudspeaker systems	230.00
------------	---	---------------



X-Treme - Monitor Line

XTMON12	Professional Stage Monitor - Power handling RMS: 450 W - Power handling Music: 900 W Impedance: 8 Ohm - Max SPL (@ 1m): 132 dB Transducers: LF 1x12" Neodymium, HF 1x3" Titanium, coaxial	1039.00
XTMON15	Professional Stage Monitor - Power handling RMS: 500 W - Power handling Music: 1000 W Impedance: 8 Ohm - Max SPL (@ 1m): 133 dB Transducers: LF 1x15" Neodymium, HF 1x3" Titanium, coaxial	1265.00

X-Treme - Active Monitor Line with dsp

XTMON12/A	Active Professional Stage Monitor - Class D Digital Amplifier - Amplifier Power RMS: 800+800 W DSP on board: 24 bit, 96 kHz (2 presets) - Network for XT-NET - Max SPL (@ 1m): 132 dB Transducers: LF 1x12" Neodymium, HF 1x3" Titanium, coaxial	2174.00
XTMON15/A	Active Professional Stage Monitor - Class D Digital Amplifier - Amplifier Power RMS: 800+800 W DSP on board: 24 bit, 96 kHz (2 presets) - Network for XT-NET - Max SPL (@ 1m): 133 dB Transducers: LF 1x15" Neodymium, HF 1x3" Titanium, coaxial	2415.00

X-Treme - Monitor Line Accessories

XT-NETINT	Network Interface for XT-NET connection (PC adapter: from USB or RS232 to standard RJ45)	325.00
XT-NETPS	Power unit to supply up to 2 XT-NETINT (if a RS232 is used)	197.00
XT-NETRACK	19" Rack mounted patch board with 3 sockets for XT-NET pc adapters - 1 rack unit	141.00



XTMON12



XTMON15

X-Treme - Classic Line

XTH	Two-way (MF-HF) Professional Speaker - Power handling RMS: 550 W - Power handling Music: 1100 W Impedance: 8 Ohm - Max SPL (@ 1m): 137 dB Transducers: MF 1x12" Neodymium, HF 1x2" Titanium	1987.00
XTL	Professional Woofer - Power handling RMS: 850 W - Power handling Music: 1700 W Impedance: 8 Ohm - Max SPL (@ 1m): 137 dB Transducers: LF 1x18"	1499.00
XTS	Professional Subwoofer - Power handling RMS: 1200 W - Power handling Music: 2400 W Impedance: 8 Ohm - Max SPL (@ 1m): 137 dB Transducers: 1x18" Neodymium	1526.00

X-Treme - Classic Line Long Throw Module

XTLT	Professional Long Throw Module - Power handling RMS: 460 W - Power handling Music: 900 W Impedance: 4 Ohm - Max SPL (@ 1m): 140 dB Transducers: MF 3x6" Neodymium, HF 2x1" Titanium - Narrow Beam Double Horn	2745.00
-------------	---	----------------

X-Treme - Classic Line Accessories

STD-XT2	Flying bar to suspend 2 Classic Line loudspeaker systems	408.00
STD-XT3	Flying bar to suspend 3 Classic Line loudspeaker systems	568.00
XT-KITSTD	Flying kit to hook up 1 Classic Line speaker to the STD-XT2 or STD-XT3 bars	117.00
XT-KITCLA	Flying kit to hook up 1 Classic Line speaker to another one	145.00
XT-G	"Bri pin" ring hook D. 11 mm	11.00
XT-TIR	Tie rod D. 8A/A L. 350-500-650 mm	25.00
XT-PIN	Stainless steel spring pin with ball locking	23.00
XT-SN	Joint for hanging 1 Classic Line speaker to another one	27.00
XT-TF	Strip-type belt with ratchet (D. mm 25, L. m 4.5)	46.00
XT-PSB32/4	Patch board 32A - 2 XLR IN, 2 XLR OUT - 4 Speakon OUT NL4MPR - 3 rack units	714.00
XT-COVER	Protection enclosure for Classic Line loudspeaker systems	114.00
XTCLASSIC-SK	Wheelboard for all the Classic Line loudspeaker systems	190.00



XTH

X-Treme - X-ONE

XTO	Single Point Source Speaker - Power handling RMS: 800 W - Power handling Music: 1600 W Impedance (full range): 8 Ohm - Max SPL (@ 1m): 134 dB Transducers: LF 1x15" Neodymium, HF 1x2.83" Titanium, coaxial Coverage Angle (-6 dB): 60° conical - Horizontal, Vertical and Crosswise Constant Directivity Special design for being also used as stage monitor with two different vertical angles for near or far listeners	1343.00
------------	--	----------------

X-Treme - X-ONE Subwoofers

XTOS	Professional Subwoofer - Power handling RMS: 1000 W - Power handling Music: 2000 W Impedance: 8 Ohm - Max SPL (@ 1m): 133 dB Transducers: 1x15" Neodymium Properly realized for a perfect coupling with an XTO loudspeaker system	1053.00
-------------	--	----------------

XTODS	Professional Double Subwoofer - Power handling RMS: 2000 W - Power handling Music: 4000 W Impedance: 4 Ohm - Max SPL (@ 1m): 139 dB Transducers: 2x15" Neodymium Properly realized for a perfect coupling with 2 XTO loudspeaker systems	2110.00
--------------	---	----------------

X-Treme - X-ONE Accessories

STD-ONE	Horizontal flying bar to suspend a XTO or XTOS speaker to create horizontal clusters (2 XT-PIN included)	113.00
STD-ONEBAR	Vertical flying bar to suspend a XTO or XTOS speaker to create vertical clusters (2 XT-PIN included)	132.00
XT-GN	Hook for the attachment to a rigging system	10.00
XT-PIN	Stainless steel spring pin with ball locking	23.00
XT-KITONEV	Flying kit to secure a XTO or XTOS speaker to another one to create vertical clusters (2 STD-ONEBAR + 2 XT-G + 1 XT-SC)	289.00
XT-G	"Bri pin" ring hook D. 11 mm	11.00
XT-SC	Screw Catch for vertical connection	9.00
XT-KITONEH	Flying kit to secure a XTO or XTOS speaker to another one to create horizontal clusters (4 XT-PIN + 2 XT-ONEAC)	189.00
XT-ONEAC	Adapter for the connection of a XTO or XTOS speaker to another one in horizontal clusters	93.00
XT-TF	Strip-type belt with ratchet (D. mm 25, L. m 4.5)	46.00
XT-ST100	Adjustable-height stand holder for subwoofer-upper module connection	39.00
XT-ST125	Adjustable-height three-legged stand for a XTO speaker	86.00
XT-SNO	Joint for subwoofer-upper module connection suitable for vertical inclination adjustment	70.00
XTODS-SK	Wheelboard for XTODS subwoofer	211.00



XTO



XTOS



XTODS



XTO+XTOS + XTODS

X-Treme - Deflector Line

XTD88	Professional Loudspeaker System - Power handling RMS: 550 W - Power handling Music: 1000 W Impedance: 8 Ohm - Max SPL (@ 1m): 129 dB - Transducers: LF 2x8" Neodymium, HF 1x1" Mylar - AWSH [®]	818.00
XTD12	Professional Loudspeaker System - Power handling RMS: 850 W - Power handling Music: 1700 W Impedance: 8 Ohm - Max SPL (@ 1m): 133 dB - Trans.: LF 1x12" Neodymium, HF 1x1.4" Titanium - AWSH [®] Cabinet equipped with a proprietary curved deflector designed to control the inner air flow	1267.00
XTD15	Professional Loudspeaker System - Power handling RMS: 750 W - Power handling Music: 1500 W Impedance: 8 Ohm - Max SPL (@ 1m): 134 dB - Trans.: LF 1x15" Neodymium, HF 1x1.4" Titanium - AWSH [®] Cabinet equipped with a proprietary curved deflector designed to control the inner air flow	1255.00
XTD1015	Three-way Professional Loudspeaker System - Power handling RMS: 1400 W - Power handling Music: 2800 W Impedance (bi-amp): 8 (LF), 8 (MF+HF) Ohm - Max SPL (@ 1m): 138 dB Transducers: LF 1x15" Neodymium, MF 1x10" Neodymium, HF 1x1.4" Titanium - AWSH [®] Cabinet equipped with a proprietary curved deflector designed to control the inner air flow	1569.00
XTDS15	Professional Subwoofer - Power handling RMS: 1000 W - Power handling Music: 2000 W Impedance: 8 Ohm - Max SPL (@ 1m): 134 dB - Transducers: 1x15" Neodymium	877.00
XTDS18	Professional Subwoofer - Power handling RMS: 1200 W - Power handling Music: 2400 W Impedance: 8 Ohm - Max SPL (@ 1m): 136 dB - Transducers: 1x18" Neodymium	989.00



XTD88



XTD12



XTD15



XTD1015



XTDS15



XTDS18

X-Treme - Active Deflector Line with dsp

XTD88/A	Active Professional Loudspeaker System - Class D Digital Amplifier - Amplifier Power RMS: 500 W Switching DSP: 24 bit, 96 kHz (2 presets) - Max SPL (@ 1m): 129 dB Transducers: LF 2x8" Neodymium, HF 1x1" Mylar - AWSH®	1341.00
XTD12/A	Active Professional Loudspeaker System - Class D Digital Amplifier - Amplifier Power RMS: 800+800 W Switching DSP: 24 bit, 96 kHz (4 presets) - Max SPL (@ 1m): 133 dB Transducers: LF 1x12" Neodymium, HF 1x1.4" Titanium - AWSH® Cabinet equipped with a proprietary curved deflector designed to control the inner air flow	2099.00
XTD15/A	Active Professional Loudspeaker System - Class D Digital Amplifier - Amplifier Power RMS: 800+800 W Switching DSP: 24 bit, 96 kHz (4 presets) - Max SPL (@ 1m): 134 dB Transducers: LF 1x15" Neodymium, HF 1x1.4" Titanium - AWSH® Cabinet equipped with a proprietary curved deflector designed to control the inner air flow	2178.00
XTD1015/A	Active Three-way Professional Loudspeaker System - Class D Digital Amplifier - Amp. Power RMS: 800+800 W Switching DSP: 24 bit, 96 kHz (4 presets) - Max SPL (@ 1m): 138 dB Transducers: LF 1x15" Neodymium, MF 1x10" Neodymium, HF 1x1.4" Titanium - AWSH® Cabinet equipped with a proprietary curved deflector to control the inner air flow	2564.00
XTDS15/A	Active Professional Subwoofer - Class D Digital Amplifier - Amplifier Power RMS: 1600 W DSP on board: 24 bit, 96 kHz (4 presets) - Max SPL (@ 1m): 134 dB - Transducers: 1x15" Neodymium	1868.00
XTDS18/A	Active Professional Subwoofer - Class D Digital Amplifier - Amplifier Power RMS: 1600 W DSP on board: 24 bit, 96 kHz (4 presets) - Max SPL (@ 1m): 136 dB - Transducers: 1x18" Neodymium	1979.00

X-Treme - Deflector Line Accessories

STD-WALL	Wall bracket for vertical support of a Deflector Line loudspeaker system	64.00
XT-KITDEF	Flying kit (formed by 3 XT-FTH) to hang up 1 Deflector Line speaker on a rigging system	18.00
XT-FTH	Joint hook with ring to be wedged into the flying track for horizontal or vertical suspension	6.00
XT-ST100	Adjustable-height stand holder for subwoofer-upper module connection	39.00
XT-ST125	Adjustable-height three-legged stand	86.00



XT-FTH



X-Treme - "Big Punch" High Power Subwoofers

XTHPS21	Professional "Infra-bass" Subwoofer - Power handling RMS: 1500 W - Power Music: 3000 W Impedance: 8 Ohm - Max SPL (@ 1m): 139 dB - Transducers: 1x21" Neodymium	1586.00
XTHPS33	Professional "Big Punch" Double Subwoofer - Power handling RMS: 2200 W - Power Music: 4400 W Impedance: 4 Ohm - Max SPL (@ 1m): 142 dB - Transducers: 1x15" Neodymium + 1x18" Neodymium	2408.00
XTHPS36	Professional "Big Punch" Double Subwoofer - Power handling RMS: 2400 W - Power Music: 4800 W Impedance: 4 Ohm - Special version available on request: 4+4 Ohm impedance Max SPL (@ 1m): 143 dB - Transducers: 2x18" Neodymium	2448.00
XTCARDIOID	Professional "Big Punch" Cardioid Subwoofer - Power handling RMS: front 2400 W (4 Ohm), rear 1200 W (8 Ohm) - Max SPL (@ 1m): 144 dB - Transducers: 3x18" Neodymium	2913.00

X-Treme - Active "Big Punch" HPS with dsp

XTHPS36/A	Active Professional "Big Punch" Double Subwoofer - Class D Digital Amplifier - Amp. Power RMS: 2500 W DSP on board: 24 bit, 96 kHz (2 presets) - Network for XT-NET - Max SPL (@ 1m): 143 dB Transducers: 2x18" Neodymium	3946.00
------------------	---	----------------

X-Treme - "Big Punch" HPS Accessories

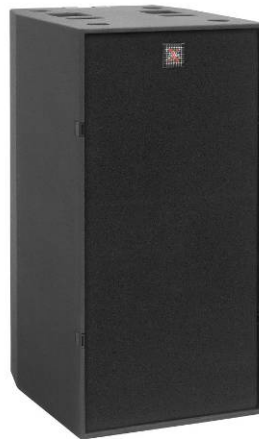
XTHPS21-SK	Wheelboard for XTHPS21 subwoofer	182.00
XTHPS33-SK	Wheelboard for XTHPS33 double subwoofer	211.00
XTHPS36-SK	Wheelboard for XTHPS36 double subwoofer	211.00
XTCARDIOD-SK	Wheelboard for XTCARDIOID subwoofer	211.00



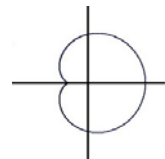
XTHPS21



XTHPS36



XTHPS33



XTCARDIOID

X-Treme - Digital Technology Amplifiers

XTDT3200	Stereo Switching Class D Amplifier with PFC (95-265 VAC) - Output Power RMS: 2x1600 W (@ 4 Ohm) Frequency response: 20÷20k Hz (- 1 dB) - Selectable Gain from 26 dB to 44 dB (3 dB step) THD+N < 0.1% - SMPTE-IM < 0.35% - Net Weight: 11.5 Kg	2044.00
XTDT3800	Stereo Switching Class D Amplifier with PFC (95-265 VAC) - Output Power RMS: 2x1900 W (@ 4 Ohm) Frequency response: 20÷20k Hz (- 1 dB) - Selectable Gain from 26 dB to 44 dB (3 dB step) THD+N < 0.1% - SMPTE-IM < 0.35% - Net Weight: 11.5 Kg	2290.00
XTDT4800F	Stereo Switching Class D Amplifier with PFC (95-265 VAC) - Output Power RMS: 4x1200 W (@ 4 Ohm) Frequency response: 20÷20k Hz (- 1 dB) - Selectable Gain from 26 dB to 44 dB (3 dB step) THD+N < 0.1% - SMPTE-IM < 0.35% - Net Weight: 13.5 Kg	2947.00
XTDT6000F	Stereo Switching Class D Amplifier with PFC (95-265 VAC) - Output Power RMS: 4x1500 W (@ 4 Ohm) Frequency response: 20÷20k Hz (- 1 dB) - Selectable Gain from 26 dB to 44 dB (3 dB step) THD+N < 0.1% - SMPTE-IM < 0.35% - Net Weight: 13.5 Kg	3419.00

X-Treme - Controllers

XTDP24	Digital Speaker Management System - Ways: 2 Inputs, 4 Outputs - Frequency response: 20÷20k Hz (± 0.5 dB) Sampling: 24 bit, 96 kHz with third generation Sharc processors Remote PC control for long-distances by XT-NET networking (through Ethernet cable)	1258.00
XTDP26	Digital Speaker Management System - Ways: 2 Input, 6 Output - Frequency response: 20÷20k Hz (± 0.5 dB) Sampling: 24 bit, 96 kHz with third generation Sharc processors Remote PC control for long-distances by XT-NET networking (through Ethernet cable)	1472.00



XTDT family



XTDP24+XTDP26

Prijzen in euro excl. BTW.

Prijswijzigingen voorbehouden.

Op alle leveringen zijn de verkoopvoorwaarden van toepassing zoals deze gedeponerd zijn bij de kamer van koophandel te Enschede no: 06075643